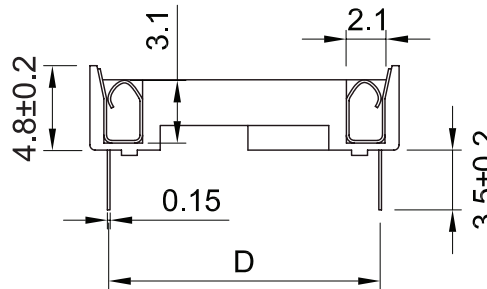
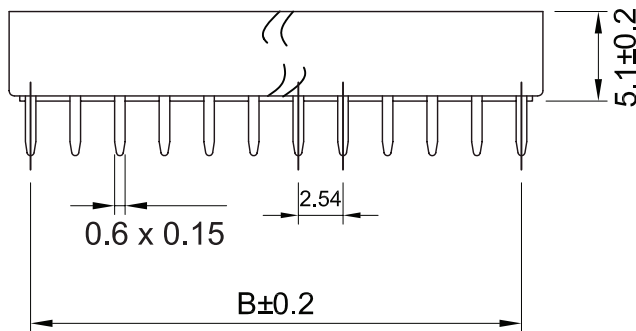
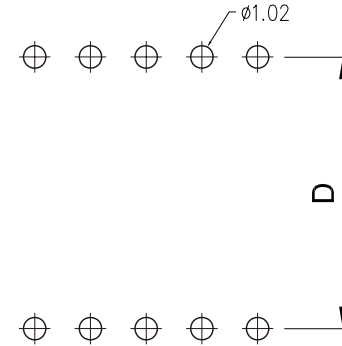


Recommended  
P.C. Board Hole Layout



General Tolerance	
X. ± 0.50	X.° ± 5°
.X ± 0.20	.X° ± 2°
.XX ± 0.10	.XX° ± 1°
Units : mm	

## Specifications

Current Rating: 1 Amp  
 Operating Voltage: 250V AC max.  
 Dielectric Withstanding Voltage: 1000V AC for 1 min.  
 Insulator Resistance: 5000 Megohms min.  
 Contact Resistance: 15 mohms max.  
 Operating Temperature: -40°C ~ +105°C  
 Contact Material: Phosphor Bronze  
 Insulator Material: Polyester, UL 94V-0 P.B.T.  
 Contact Plating: Tin Plating

## Part Numbering System

Part Number	Contacts	Dimension mm				Bar Option
		A	B	C	D	
I-06	06	7.62	5.08	9.96	7.62 (.3")	without Bar
I-08	08	10.16	7.62			
I-14	14	17.78	15.24			
I-16	16	20.32	17.78			
I-18	18	22.86	20.32			
I-20	20	25.40	22.86			
I-22-3P	22	27.94	25.40	12.7	10.16 (.4")	without Bar
I-24-3P	24	30.48	27.94			
I-28-3P	28	35.56	33.02	17.6	15.24 (.6")	with Bar
I-22-4P	22	27.94	25.40			
I-24-4P	24	30.48	27.94			
I-24-6P	24	30.48	27.94			
I-28-6P	28	35.56	33.02			
I-32-6P	32	40.64	38.10			
I-40-6P	40	50.80	48.26	25.93	22.86 (.9")	
I-42-6P	42	53.34	50.80			
I-48-6P	48	60.96	58.42			
I-64-9P	64	81.28	78.74			